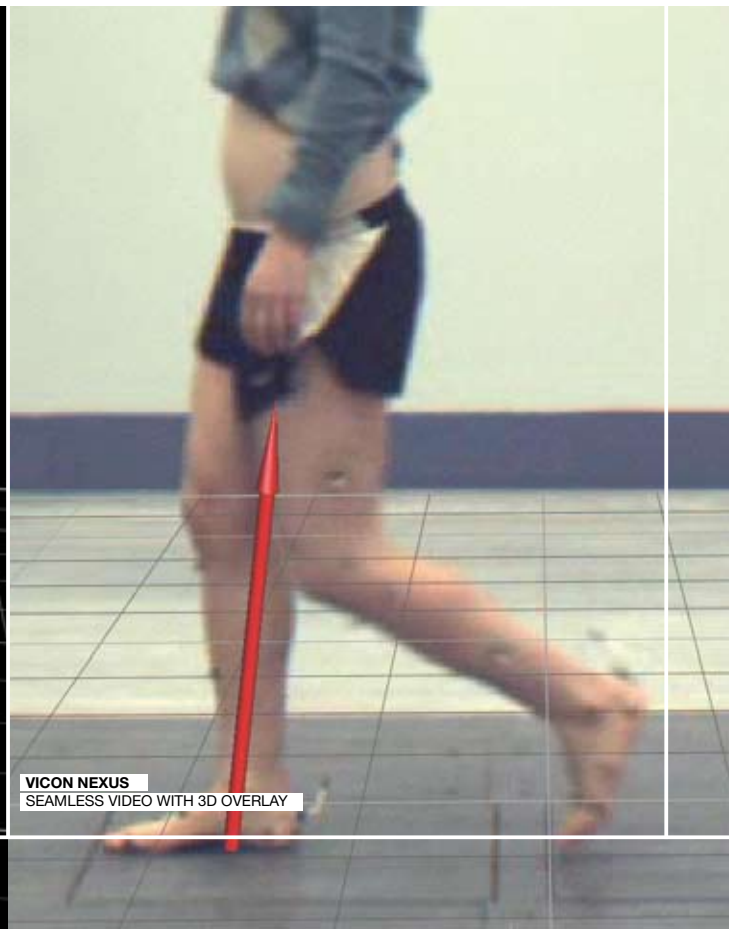
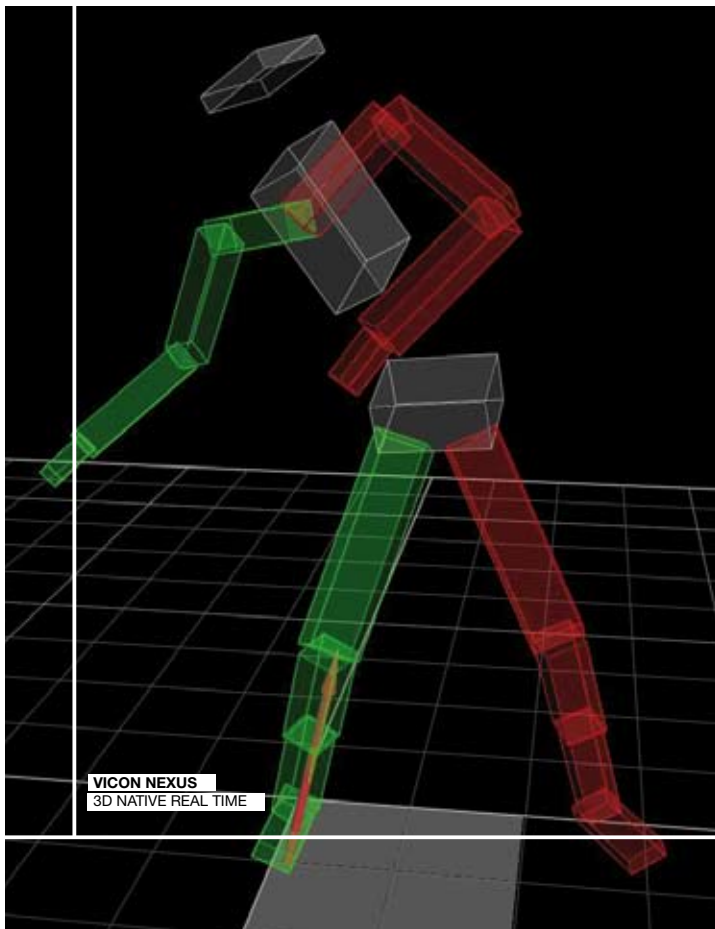
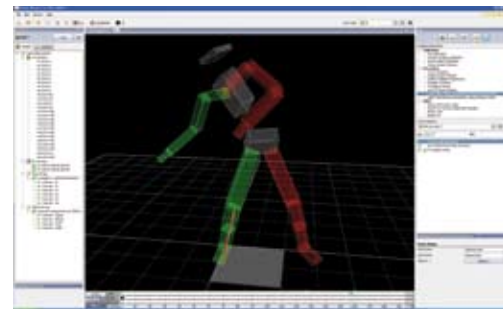


# VICON NEXUS

- \_ EASY TO LEARN, EASY TO USE
- \_ NATIVE REAL TIME
- \_ SEAMLESS VIDEO
- \_ CUSTOMIZE EVERYTHING
- \_ PAST PRESENT, FUTURE PERFECT

VICON NEXUS CONNECTS YOU TO THE FUTURE; EASY TO USE AND COMPLETELY CUSTOMIZABLE, NEXUS SUITS ANY LIFE SCIENCE SITUATION.





# VICON NEXUS

## KEY BENEFITS

- \_ EASY TO LEARN AND EASY TO USE. THE CLEAR, WELL-DESIGNED USER INTERFACE GUIDES YOU THROUGH THE VARIOUS TASKS.
- \_ NEXUS IS NATIVE REAL TIME ALL THE TIME – BOTH DATA AND SYSTEM STATUS IS CONTINUOUSLY UPDATED.
- \_ NEXUS INTEGRATES DIGITAL VIDEO SEAMLESSLY AND LETS YOU OVERLAY 3D DATA ON THE VIDEO IMAGE.
- \_ YOU CAN CUSTOMIZE EVERYTHING IN NEXUS – PROTOCOLS, PIPELINES, COLORS, SIZES, LAYOUTS AND MORE.
- \_ NEXUS IS BACKWARDS COMPATIBLE WITH EXISTING DATA AND PROCESSING PIPELINES – AS WELL AS THE PLATFORM FOR THE FUTURE.

### OVERVIEW

Nexus 1.3 is fourth version of Nexus, the first Life Science specific motion capture software application on the market. Unlike other packages, Nexus has been designed from the ground up for Life Science requirements and workflows. Nexus 1.3 builds on the functionality introduced in previous versions of Nexus, offering you more features, better efficiency, faster data throughput, and more connection options than ever before.

### EASY TO LEARN, EASY TO USE

Nexus has been designed according to modern user interface principles and presents you with clearly and logically laid out tools. Your workflow follows a left-to-right, top-to-bottom fashion, making the task of capturing and processing your data easier and clearer. Nexus 1.3 has several new features implemented as a result of user feedback. The result is that common tasks such as choosing capture frequencies and creating capture sessions are even easier than before.

### NATIVE REAL TIME

Nexus has been designed to show you everything in real time: marker data, analog data, reference video data as well as the current system status. All the measured data is made available for display in Nexus or for transmission to 3rd party application within milliseconds of being captured. Nexus 1.3 further optimizes the pipeline, ensuring that data throughput is efficient even for very high data rates.

### SEAMLESS VIDEO

Nexus is the only software application on the market to seamlessly integrate and frame synchronize digital reference video with the marker and analog data. You can also calibrate the reference video camera, which lets you overlay 3D information on the video image, for example the ground reaction force vector or the 3D marker positions. Nexus 1.3 introduces support for a new generation of high performance GigaBit Ethernet reference video cameras which offer higher frame rates, better resolution and better picture quality than previous generation cameras.

### CUSTOMIZE EVERYTHING

Nexus lets you configure the application to suit your needs and your workflow. Workflows can be automated by setting up a pipeline containing the calculations you need, and then execute the pipeline automatically. You can further simplify your workflow by setting up a step-by-step protocol using the Protocol Builder, which lets user perform common tasks without having to learn how to use the application. Nexus 1.3 introduces a customizable toolbar, which lets you set up one-click buttons to execute pipelines, change the visual appearance or choose what data to display.

### PAST PRESENT, FUTURE PERFECT

Your existing data is safe with Nexus – as is your existing processing pipeline. Nexus fully supports C3D files as well as being compatible with Vicon Workstation plug-ins such as Plug-in Gait and PECS. However, although the past is firmly present in Nexus, equally important is the fact that Nexus has been designed for the future. Nexus 1.3 was released one year after the first version of Nexus, demonstrating Vicon's commitment to continuously add technology and functionality to the Nexus platform.

### COMMUNICATE

For further information on Vicon Nexus and other Vicon products please contact your nearest office or email [info@vicon.com](mailto:info@vicon.com)

### OXFORD

14 Minns Business Park,  
West Way, Oxford, OX2 0JB, UK  
T: +44 (0) 1865 261800  
F: +44 (0) 1865 240527

### DENVER

7388 S. Revere Parkway Suite 901,  
Centennial, CO 80112, USA  
T: +1 303 799 8686  
F: +1 303 799 8690

### LOS ANGELES

5419 McConnell Avenue,  
Los Angeles, CA 90066, USA  
T: +1 310 306 6131  
F: +1 310 437 4229

### LAKE FOREST

9 Spectrum Pointe Drive,  
Lake Forest, CA 92630, USA  
T: +1 949 472 9140  
F: +1 949 472 9136